

WINDOWS

# TRUSTGARD™



# TRUSTGARD™



DOUBLE HUNG



SLIDER



PICTURE



HOPPER



## EARNED TRUST

The classic good looks and outstanding performance of our TrustGard™ Series has earned it a reputation for adaptability, reliability, and longevity.

# FEATURES

## ACROSS THIS SERIES

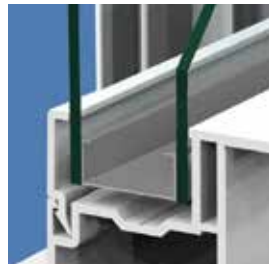
### 100% VIRGIN VINYL

Maintenance-free frames, with fusion welded corners for increased structural integrity, exceeds the strength of ordinary designs.



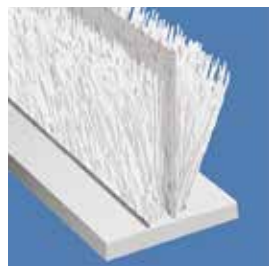
### DOUBLE PANE CLEAR GLASS

Standard throughout this series.



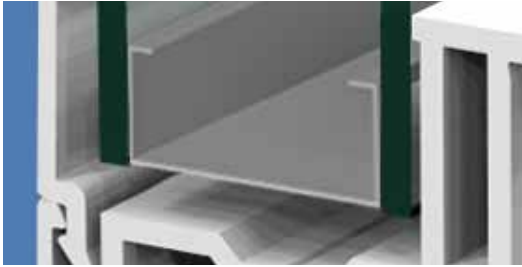
### DOUBLE WEATHERSTRIPPING

Our draft-resistant double weatherstripping provides UV protection, helps resist mold, mildew, and fungus, and prevents dust, light, noise, and air infiltration.

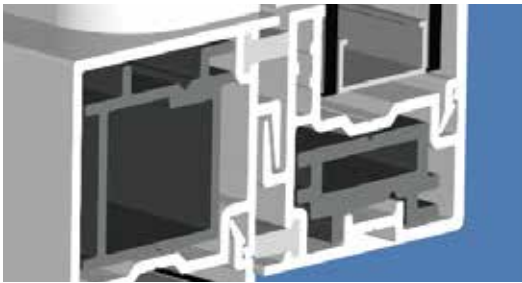


# TRIED. TESTED. TRUSTED.

Utilizing patented technology and traditional glass-in-frame construction, TrustGard™ stands apart from the field in every other way. By allowing you to choose what options are relevant to your project, TrustGard™ addresses your needs first.



**PPG/VITRO  
INTERCEPT® U-SPACER**  
Insulated glass with U-Spacer unit utilizes patented intercept technology.



**ALUMINUM REINFORCED  
INTERLOCKING SASHES  
(DOUBLE HUNG/SLIDER)**  
Aluminum reinforced, interlocking sashes provide increased strength where sashes meet.



## OPTIONS (FULL OPTIONS INFO ON BACK PAGE.)

### COLOR



### GRIDS



### PERFORMANCE

#### NORTHERN PACKAGE

- 1 SOFT-COAT LOW-E PANE
- 2 ARGON GAS
- 3 LOW-E PYROLYTIC HARD-COAT PANE

#### ENERGY PACKAGE

- 1 SOFT-COAT LOW-E PANE
- 2 ARGON GAS
- 3 FOAM ENHANCEMENT

#### LOW-E/ARGON PACKAGE

- 1 SOFT-COAT LOW-E PANE
- 2 ARGON GAS

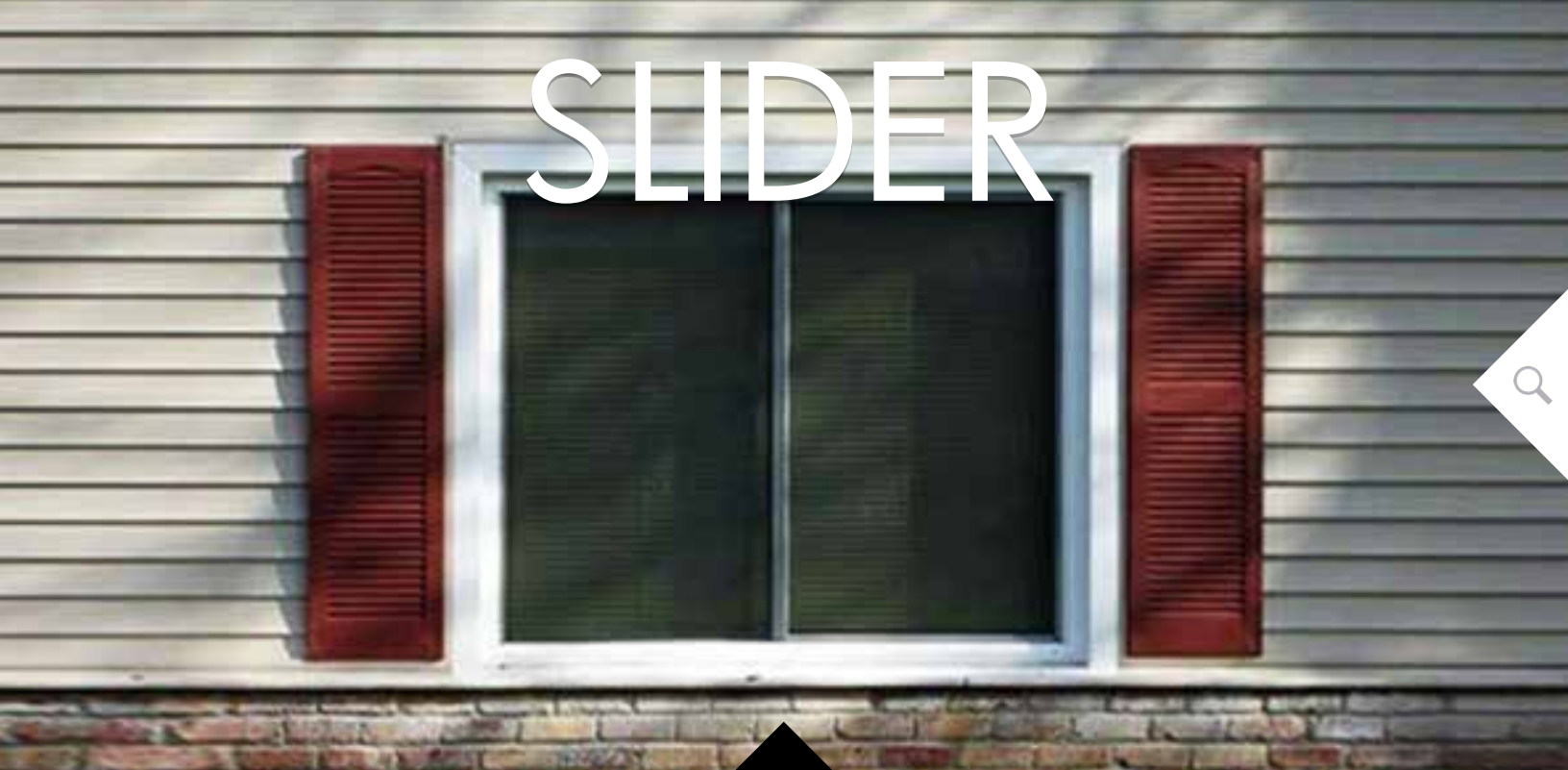
Due to the effects of heat, light, age and the printing process, samples shown here may vary slightly in color or sheen from the actual materials.

# DOUBLE HUNG



TYPE GLASS COLOR GRIDS  
DOUBLE HUNG | LOW-E | WHITE | COLONIAL CONTOUR

# SLIDER



TYPE GLASS COLOR GRIDS  
SLIDER | LOW-E | WHITE | NONE



# DOUBLE HUNG

Double Hung windows are the most popular window style and feature vertically moving sashes. The classic good looks and outstanding performance of our TrustGard™ Double Hung has earned it a reputation for adaptability, reliability, and longevity.

## FEATURES

### DELUXE DUAL-VENTILATION LATCHES

Limit the window opening to a set point during ventilation.



### TILT LATCHES

Both sashes tilt in easily for safe, fast cleaning from inside the home.



### HEAVY-DUTY LOCK

One simple, smooth hand turn; heavy-duty cam-action lock of die cast zinc.



### HALF SCREEN WITH ALUMINUM FRAME

BetterVue screens are fiberglass mesh and extruded aluminum frame, featuring increased strength and improved visibility compared to standard screens.



### STAINLESS STEEL CONSTANT FORCE BALANCE SYSTEM

Provides smooth and effortless operation.



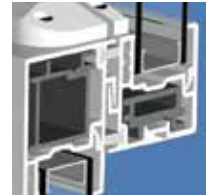
### EXTRUDED LIFT & PULL RAILS

Built directly into sash for greater durability. No added or snap-in components.



### ALUMINUM REINFORCED INTERLOCKING SASHES

Aluminum reinforced, interlocking sashes provide increased strength where sashes meet.



# SLIDER

The TrustGard™ Slider features sashes that glide smoothly from side-to-side on brass rollers along grooves on the frame structure. Available as a 2-LITE or 3-LITE, Sliders are very popular for their lateral movement and ease of use.

### ALUMINUM REINFORCED INTERLOCKING SASHES

Aluminum reinforced, interlocking sashes provide increased strength where sashes meet.



### EXTRUDED LIFT & PULL RAILS

Built directly into sash for greater durability. No added or snap-in components.



### HEAVY-DUTY LOCK

One simple, smooth hand turn; heavy-duty cam-action lock of die cast zinc.



### HALF SCREEN WITH ALUMINUM FRAME

BetterVue screens are fiberglass mesh and extruded aluminum frame, featuring increased strength and improved visibility compared to standard screens.



# PICTURE



TYPE GLASS COLOR GRIDS  
PICTURE | LOW-E | ALMOND | COLONIAL CONTOUR

# HOPPER



TYPE GLASS COLOR GRIDS  
HOPPER | CLEAR | WHITE | NONE



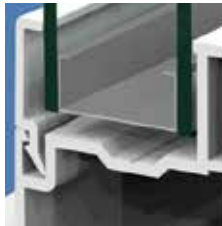
# PICTURE

Our TrustGard™ Picture window frames your view of the outside simply and elegantly.

## FEATURES

### PPG/VITRO INTERCEPT® U-SPACER

U-Spacer unit utilizes patented intercept technology.



### 100% VIRGIN VINYL

Maintenance-free frames, with fusion welded corners for increased structural integrity, exceeds the strength of ordinary designs.

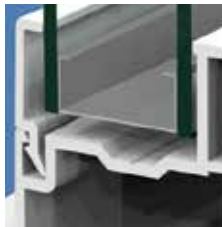


# HOPPER

The Hopper window hinges on the sides, their top edge opening inwards. The TrustGard™ Hopper is an excellent choice for those with specific needs.

### PPG/VITRO INTERCEPT® U-SPACER

U-Spacer unit utilizes patented intercept technology.



### DOUBLE WEATHERSTRIPPING

Our draft-resistant double weatherstripping provides UV protection, helps resist mold, mildew, and fungus, and prevents dust, light, noise, and air infiltration.



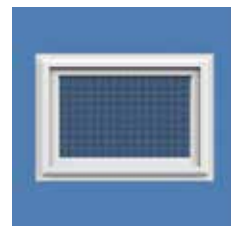
### HEAVY-DUTY DOUBLE HANDLES

Two lever-style handles that turn to fit securely into the locking mechanism.



### FULL SCREEN WITH ALUMINUM FRAME

BetterVue screens are fiberglass mesh and extruded aluminum frame, featuring increased strength and improved visibility compared to standard screens.



# OPTIONS

**COLOR** (STANDARD VINYL) Due to the effects of heat, light, age and the printing process, samples shown here may vary slightly in color or sheen from the actual materials.



WHITE



ALMOND



COCOA/WH

**GRIDS** CONTOUR (C), MATCH WINDOW COLOR | FLAT (F), WHITE/ALMOND/COCOA | ELITE (E), PEWTER OR BRASS



COLONIAL (C)



QUEEN ANNE (C)



COLONIAL (F)



QUEEN ANNE (F)



DIAMOND (F)



COLONIAL (E)



QUEEN ANNE (E)



COLONIAL (E)



QUEEN ANNE (E)

## ADDITIONAL



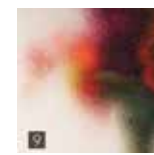
EXTENSION  
JAMB



NEW  
CONSTRUCTION



DOUBLE  
LOCKS



SPECIALTY  
GLASS



CUSTOM  
SHAPES



ORIEL STYLE/COTTAGE  
CONFIGURATIONS



FULL  
SCREENS



FACTORY  
MULLING

## PERFORMANCE



Continuous commitment to environmental conservation and energy efficiency are key ingredients in our product offering. We work toward this goal by partnering with Energy Star and offering packages that increase the energy efficiency and performance of all our products. Environmental awareness is at the forefront of our work from design to the innovative creation of manufacturing practices which are aligned with our Core Values. For full NFRC information pertaining to products within this series and specific to your geographic location please visit [NBPwindows.com/learn/energy-efficiency](http://NBPwindows.com/learn/energy-efficiency)

"ENERGY STAR® is the government-backed symbol for energy efficiency, providing simple, credible, and unbiased information that consumers and businesses rely on to make well-informed decisions." [energystar.gov](http://energystar.gov)

"The National Fenestration Rating Council is a non-profit organization that establishes objective window, door, and skylight energy performance ratings to help you compare products and make informed purchase decisions." [nfr.org](http://nfr.org)



215.535.7110 • 4280 Aramingo Avenue • Philadelphia, PA 19124-5007 • [NBPwindows.com](http://NBPwindows.com)

Northeast Building Products, LLC. and TrustGard™ Windows are registered trademarks. All Rights Reserved.

